

KIT MASTERS

8000SK Kit Assembly Instructions

DISASSEMBLY

1. Remove clutch from hub by removing the 6 allen bolts. Line the access holes up with the allen bolts to remove the bolts. Apply air pressure to the clutch so the access holes can be aligned with the allen bolts. Once aligned, remove air pressure and the clutch will lock-up.
The clutch will need to be compressed before removing and installing any parts.
2. To compress the clutch use 2 - 3/8"x3" bolts with a large flat washer over the access holes. Place the bolts opposite of each other and compress the clutch evenly. (see picture) Do not over compress.
3. Remove the Cylinder Cap by removing the 5/16" Locknut using a 1/2" socket.
4. Remove the O-ring inside the cap. Wipe the residue out of the cap and inspect it.
5. Remove the white Dust Seal. (If the dust seal is blue, also remove the o-ring underneath it.)
6. Remove the Large O-ring from the piston.

INSTALLATION

7. Clean the Dust Seal groove, and the Piston O-ring groove.
8. Apply Lube to the white Dust Seal, install it into the Dust Seal groove.
9. Apply Lube to the Piston O-ring, install it into the Piston groove.
10. Apply extra Lube to the exterior of the Piston O-ring and coat the inside of the cap with lube.
11. Place the smaller O-ring on the shoulder of the cap.
12. Place the Cap over the piston, place the tab washer over the threads of the shaft and use the 5/16" Locknut to secure.
13. Torque the 5/16" Locknut to 84 Lbs-in (9.5 Newton Meters).
14. Remove the compression bolts
15. Bolt the clutch to the hub using the 6 bolts provided.

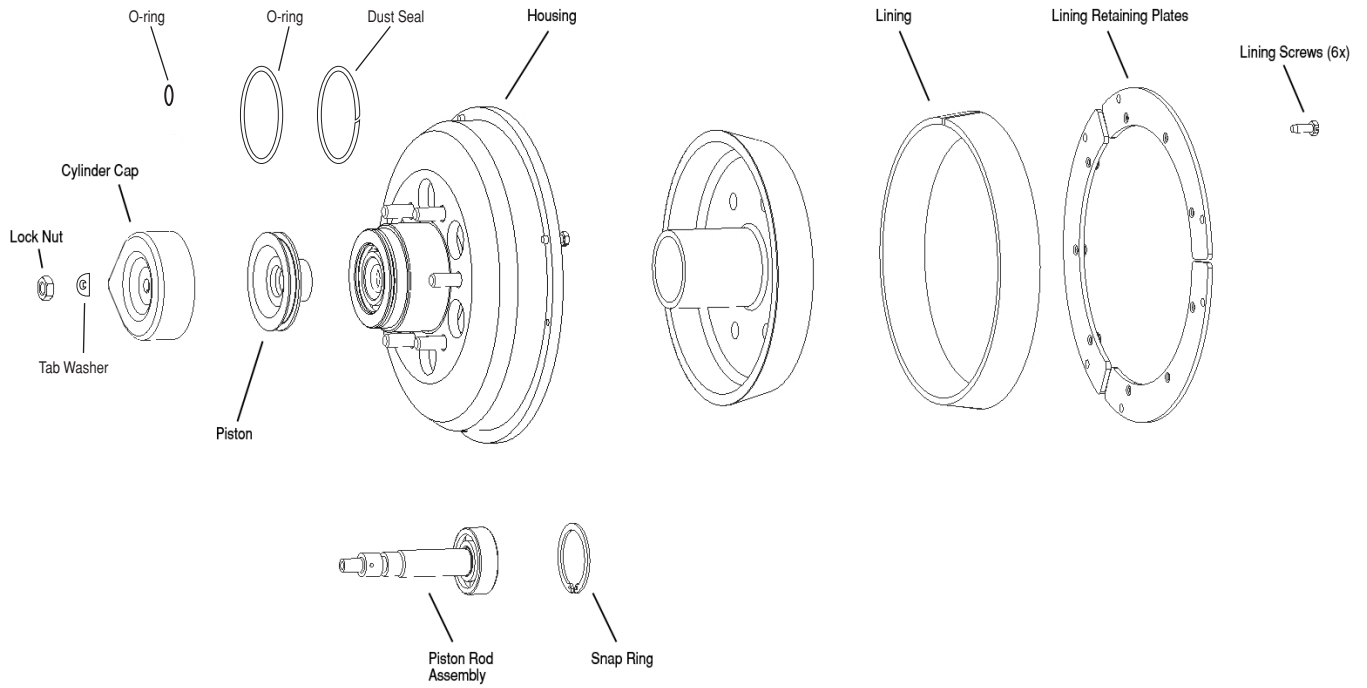
Patent(s) Pending. See www.kit-masters.com for updated list of applicable issued and pending patents.

For installation assistance, contact Kit Masters at (800)-810-9110

Picture of Compressing the clutch with two 3/8" x 3" bolts



Exploded View and Part Description



KIT MASTERS

www.kit-masters.com