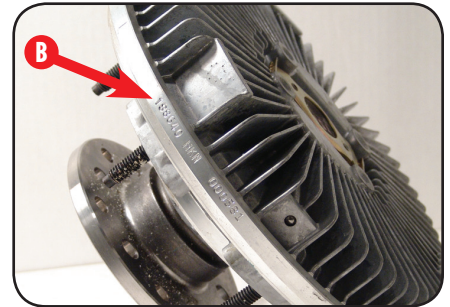
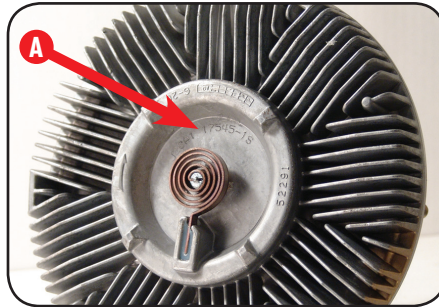


IDENTIFY YOUR VISCIOUS CLUTCH

Check for part numbers.

Part numbers are usually located on the center of the clutch by the coil (A), or along the outside edge of the clutch (B). If you have a part number, refer to the Spectrum cross-reference guide or go to www.kitmasters.com to find your new part number.



If no part numbers are available then gather the following information:

1. What is your fan size? Measure in inches.

2. What is the rotation of the fan clutch (CW or CCW)? Look at your truck from the front to determine this (some viscous clutches have arrows on the front to indicate this).

3. What is the mount type?

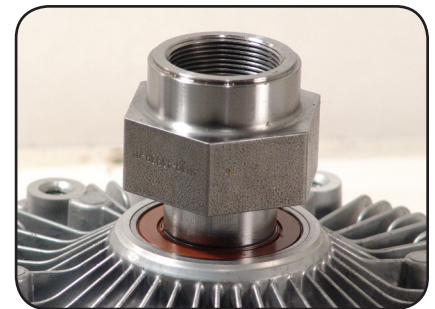
Bolt-on or Screw-on

If Bolt-on, answer questions 4 through 8.

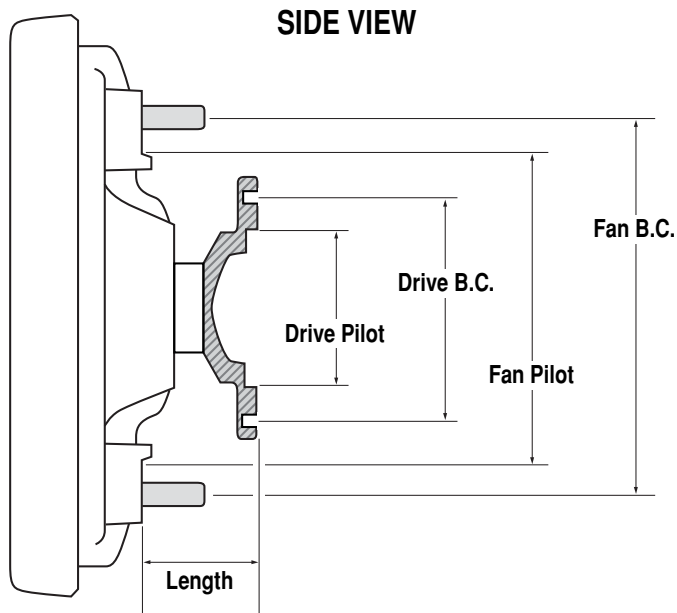
If Screw-on, answer questions 6 through 9.



Bolt-on mount style



Screw-on mount style



4. What is the Drive Bolt Circle measurement?

5. What is the Drive Pilot measurement?

6. What is the Length measurement?

7. What is the Fan Pilot measurement?

8. What is the Fan Bolt Circle measurement?

9. What is the Thread Type?

Use thread gauges, included with Spectrum cart (RV-G01, RV-G02, RV-G03).

- a) .75-16UNF-2B LH
- b) 1.25-16UN-2B LH
- c) 1.25-18UNEF-2B RH
- d) 2.25-8UNC-2A LH Male
- e) M30x2-6H LH
- f) M36x2-6H LH

Once you have all of this information, go to www.kitmasters.com/spectrum and enter these measurements to determine the required replacement.