

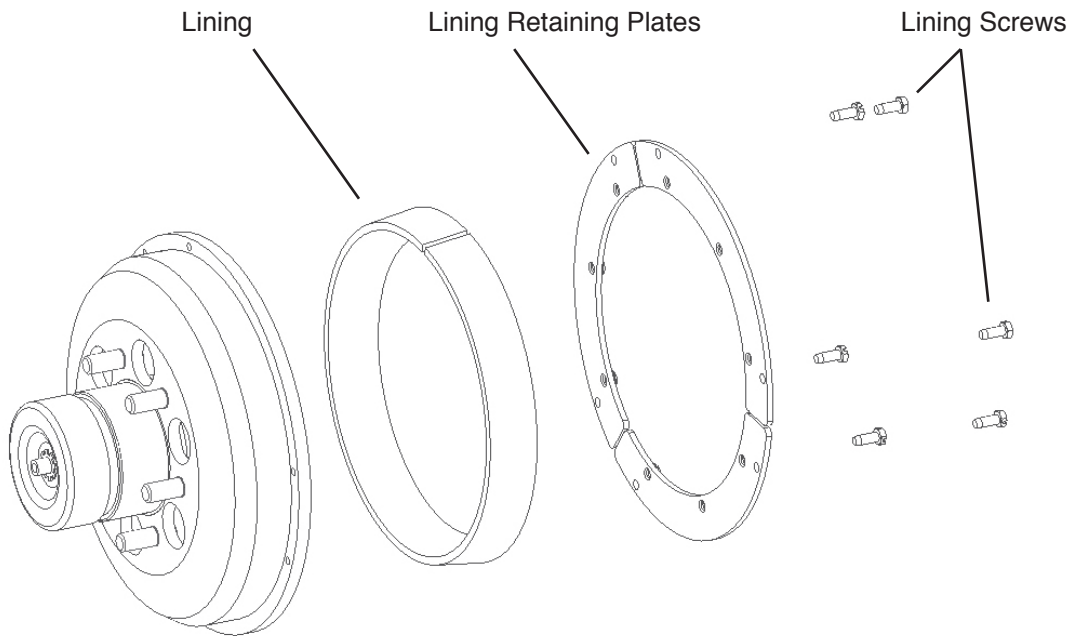
KIT MASTERS

FAN CLUTCH EXPERTS

8500L Kit Assembly Instructions

The lining may be replaced while the clutch is still on the truck.

1. Apply 90 to 120 psi of air to disengage the clutch.
2. Remove the three retaining plates by removing the six lining screws.
3. Remove the lining
4. Replace the lining, the three retaining plates and the six lining screws. Tighten to 30 lbs-in (3.4 Newton Meters).



Patent(s) Pending. See www.kit-masters.com for updated list of applicable issued and pending patents.

For installation assistance, contact Kit Masters at (800)-810-9110

KIT MASTERS

FAN CLUTCH EXPERTS

www.kit-masters.com