

## **IF YOU ARE SWITCHING FROM AN HT650® FAN CLUTCH**

### **CLUTCH**

You must ensure that your solenoid valve is plumbed correctly.

This fan clutch is spring-engaged (air-disengaged).

If you have a universal solenoid valve

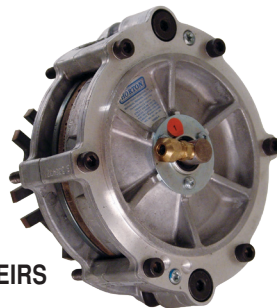
Swap the lines on the IN and the EXHAUST ports.

If you have a one-way solenoid valve

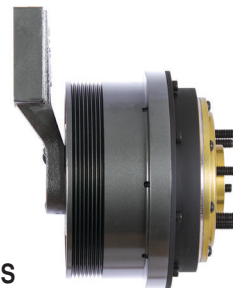
You will need to install a Normally Open solenoid valve.

## **It looks different, because it IS different.**

This can be used as a direct replacement/upgrade for HT650® fan clutch # 991455 / 981455. Our superior design makes for easier and more affordable long-term maintenance. Converting your fan clutch upgrades it from a medium duty fan clutch to a heavy duty fan clutch. Our model is capable of handling a larger fan and will last longer than the competition.



THEIRS



OURS