

# ***KIT MASTERS***

## ***FAN CLUTCH EXPERTS***

### **7500HP / 9500HP Kit Assembly Instructions**

#### **DISASSEMBLY**

1. Remove Torx screws from air chamber - using T30 bit
2. Remove air chamber from fan clutch
3. Holding air chamber upside-down, remove O-Ring and face seal
4. Remove friction plate
5. Remove large O-Ring from friction plate
6. While fan clutch is in a vise, remove locknut using 1 1/2" socket
7. Remove hub assembly
8. Using a snap ring pliers, remove the snap ring from the center of the shaft
9. Remove old air cartridge
10. Remove journal spacer from journal bracket
11. Remove sheave from journal bracket
12. Press out the two old bearings from the sheave – save any spacers between the bearings
13. Remove torx screws and friction facing from sheave – using T25 bit

#### **INSTALLATION**

1. Clean all pieces with a wire brush and cleaning solution
2. Press in one of the new bearings into the sheave, pulley (if there were spacers between the bearings in the pulley, you must reuse both of them), then press in the second new bearing.
3. Install sheave over the journal bracket
4. Use supplemental instructions to determine correct journal spacer
5. Place journal spacer over journal bracket. Place Lip Side Up
6. Install new friction facing and Torx screws, torque to 35 inch pounds – using T25 bit
7. Apply anti-sieze, or all-purpose grease (not provided) to the splines of Assembled Hub
8. Install assembled hub over shaft
9. Torque locknut to 150 Lbs.-ft. – using 1 1/2" socket
10. Apply silicone lubricant to large O-ring and install on friction plate
11. Place friction plate over hub assembly
12. Apply silicone lubricant to small O-ring and install on air chamber
13. Apply silicone lubricant on air cartridge and install new air cartridge in journal bracket
14. Install new snap ring over air cartridge
15. Install new face seal into air chamber
16. Place air chamber over friction plate
17. Install and tighten air chamber Torx screws to 180-inch pounds torque – using T30 bit
18. Do NOT remove white Teflon Fuse

Patent(s) Pending. See [www.kit-masters.com](http://www.kit-masters.com) for updated list of applicable issued and pending patents.

Video demonstration available at [www.kit-masters.com](http://www.kit-masters.com)

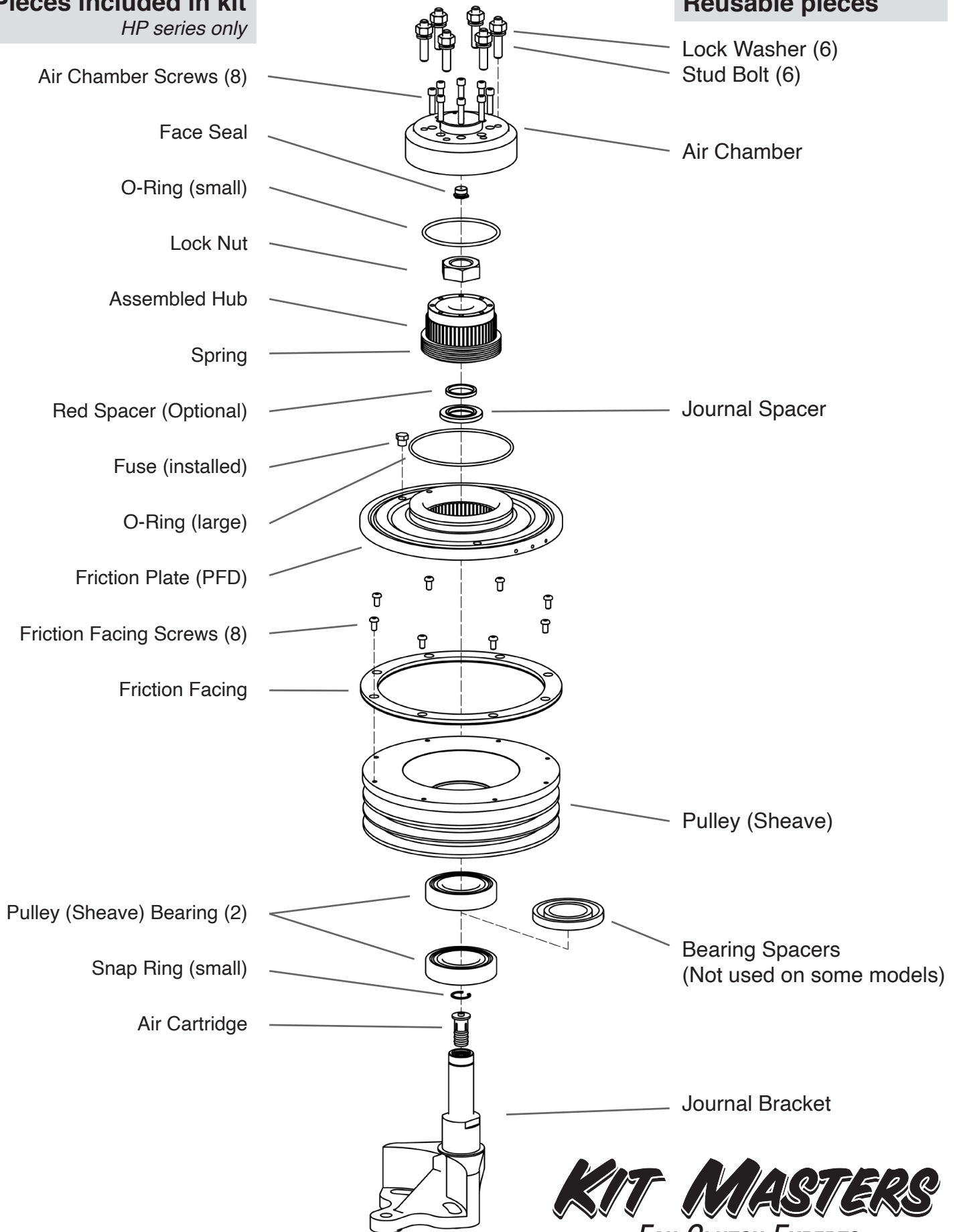
Instrucciones en Español en [www.kit-masters.com](http://www.kit-masters.com)

For installation assistance, contact Kit Masters at (800)-810-9110

## Pieces included in kit

*HP series only*

## Reusable pieces



**KIT MASTERS**  
FAN CLUTCH EXPERTS

[www.kitmasters.com](http://www.kitmasters.com)