

# KIT MASTERS

## 8000SKL Kit Assembly Instructions

### DISASSEMBLY

1. Remove clutch from hub by removing the 6 allen bolts. Line the access holes up with the allen bolts to remove the bolts. Apply air pressure to the clutch so the access holes can be aligned with the allen bolts. Once aligned, remove air pressure and the clutch will lock-up.  
**The clutch will need to be compressed before any removing and installing any parts.**
2. To compress the clutch use 2 - 3/8"x3" bolts with a large flat washer over the access holes. Place the bolts opposite of each other and compress the clutch evenly. (see picture) Do not over compress.
3. Remove the Cylinder Cap by removing the 5/16" Locknut using a 1/2" socket.
4. Remove the Seal Washer inside of the cap. Wipe the residue out of the cap and inspect it.
5. Remove the white Dust Seal. (If the dust seal is blue, also remove the o-ring underneath it.)
6. Remove the Large O-ring from the piston.
7. Remove the 3 retaining plates by removing the 6 lining screws using a 5/16" socket.
8. If the lining is free, remove it. If the lining is frozen, the clutch will need to be compressed a little more.

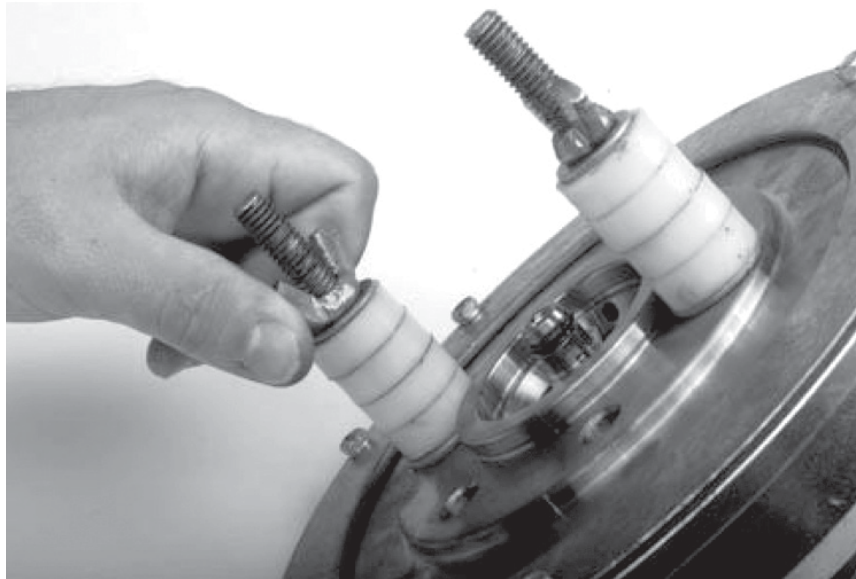
### INSTALLATION

1. Clean the Dust Seal groove and the Piston O-ring groove with a towel and solvent.
2. Apply Lube to the Combo Seal and install it into the Dust Seal groove. **Be sure the "U" is facing up.**
3. Apply extra Lube to the exterior of the Combo Seal after it is in place.
4. Apply Lube to the Piston O-ring and install it into the Piston groove.
5. Place the Seal Washer (smaller o-ring) on the shoulder of the cap.
6. Place the Cylinder Cap over the piston. Use the 5/16" Locknut to secure.
7. Torque the 5/16" Locknut to 84 Lbs-in (9.5 Newton Meters).  
If the Locknut is under tightened, an air leak may occur.  
If the Locknut is over tightened the rubber seal may be ineffective and an air leak may occur.
8. Replace the lining, the 3 retaining plates and the 6 lining screws. Tighten to 30 lbs-in (3.4 Newton Meters)
9. Remove the compression bolts.
10. Bolt the clutch to the hub using the 6 bolts provided.

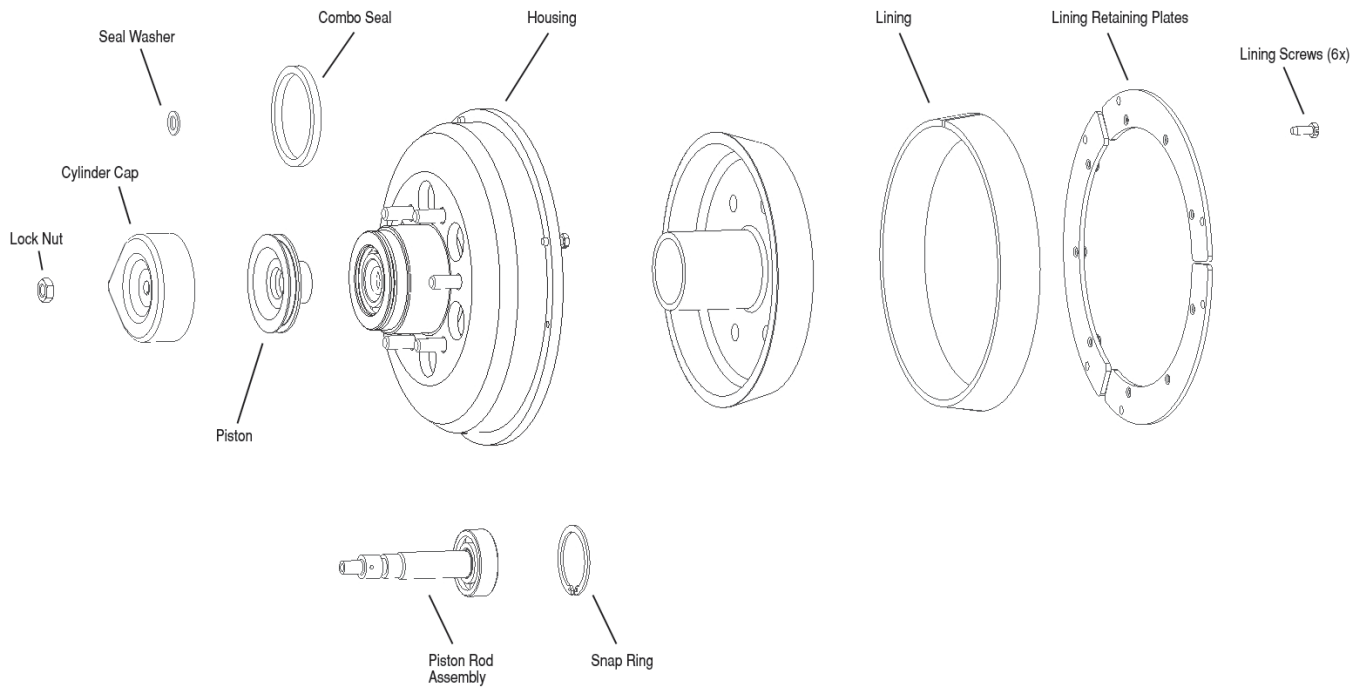
Patent(s) Pending. See [www.kit-masters.com](http://www.kit-masters.com) for updated list of applicable issued and pending patents.

For installation assistance, contact Kit Masters at (800)-810-9110

Picture of Compressing the clutch with two 3/8" x 3" bolts



### Exploded View and Part Description



# **KIT MASTERS**

[www.kit-masters.com](http://www.kit-masters.com)